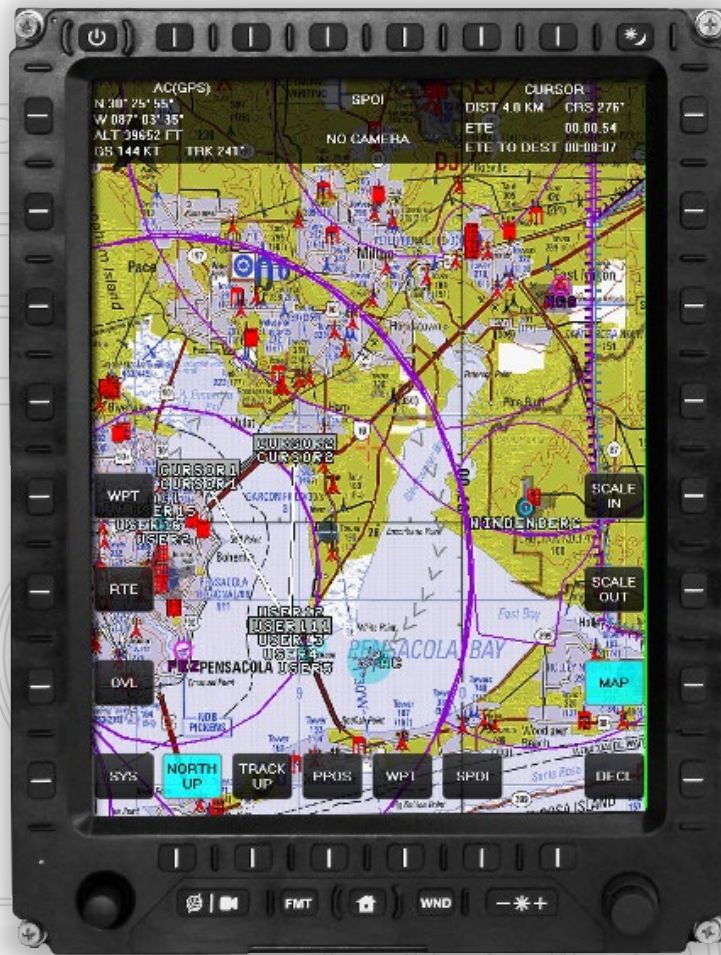


# SMART DISPLAY



## AMD3121

The AMD3121 is a rugged, field-proven portrait 12.1" SVGA smart multi-function display (SMFD). Combining leading edge display technology with an extraordinary complement of I/O and a 4th Generation Intel i7 processor in a sleek compact package, the AMD3121 offers operators and integrators amazing capability.

A wide range of sensor and system inputs are supported by the system and displayed on the highly efficient, sunlight readable display. Full 1080p60 input as well as PAL and NTSC, allows the AMD3121 to display the full range sensor video systems available today.

In addition, the system may be provided with a fully integrated Harris FliteScene or Avalex digital map. Sensor cueing, as well as augmented reality-style symbology is available with the system.

A thin, light weight SMFD, the AMD3121 is ideal for all tactical aircraft integration.

- Smart Multi-Function Display (SMFD)
- 12.1" Portrait SVGA Display
- Intel 4th Generation i7 Processor, 8 GB Memory
- 1553, ARINC429, Gigabit Ether, Serial, Discretes and ARINC825/CAN bus
- Integrated High Data Rate GPS
- 2 HD and 3 SD Video Inputs
- 4 types of Removable Memory
- Button Bezel
- Concentric Knob / Track Stick
- Integrated Digital Map System Available
- Touch Screen
- Fully MIL-STD Qualified

# AMD3121



## PERFORMANCE

- Intel® Core Processor i7
- Intel® HD Graphics 4000
- 8 GB of RAM DDR3
- Optional Operating System – Windows 7, Linux, or Realtime OS
- Internal Memory 60 GB mSATA



## ELECTRO OPTICAL

- Sunlight Readable
- 600 x 800 Resolution
- 16.7 M Colors
- 600 Nits Luminance
- Conical Viewing Cone
- LED Backlighting
- NVIS Class A



## CONTROLS

- Programmable Bezel Buttons
- PCAP Touch Screen
- Dual Encoder knob and Concentric Knob/Joystick
- Three Types of Dimming for Bezel and Display



## INPUTS/OUTPUTS

<b>RS-170</b>	3 Inputs	<b>HD-SDI</b>	2 Inputs
<b>MIL STD 1553</b>	2 Ports	<b>USB</b>	1 Rear / 1 Front
<b>Ethernet 10/100/1000</b>	3 Ports	<b>RS-232</b>	2 Ports
<b>RS-422</b>	2 Ports	<b>ARINC 429</b>	2 Ports
<b>CANbus</b>	2 Ports	<b>High Data Rate GPS</b>	1 SMA Connector



## REMOVABLE STORAGE

- SD
- SATA
- USB
- eSATA/USB Combo



## ENVIRONMENTAL

- Operating Range of -40°C to +55°C
- Storage Range of -55°C to +85°C



## QUALIFICATION

- MIL-STD-810G Qualified
- MIL-STD-461F Qualified



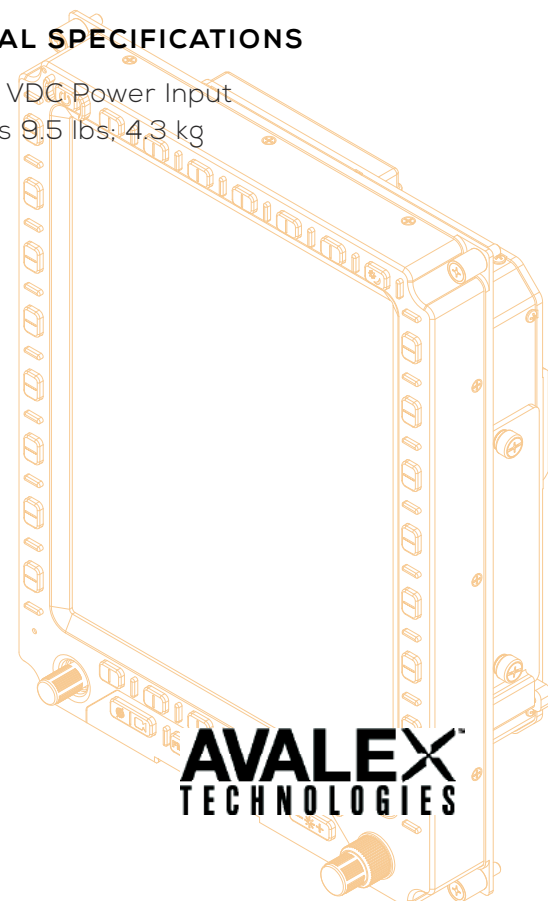
## SIZE

- Diagonal Display 12.1"; 307.3 mm
- Height 12.6"; 320 mm
- Width 9.5"; 241.3 mm
- Depth 4.12"; 104.6 mm



## GENERAL SPECIFICATIONS

- 18-28 VDC Power Input
- Weighs 9.5 lbs; 4.3 kg



[WWW.AVALEX.COM](http://WWW.AVALEX.COM)

850.470.8464

[SALES@AVALEX.COM](mailto:SALES@AVALEX.COM)

**AVALEX**  
TECHNOLOGIES